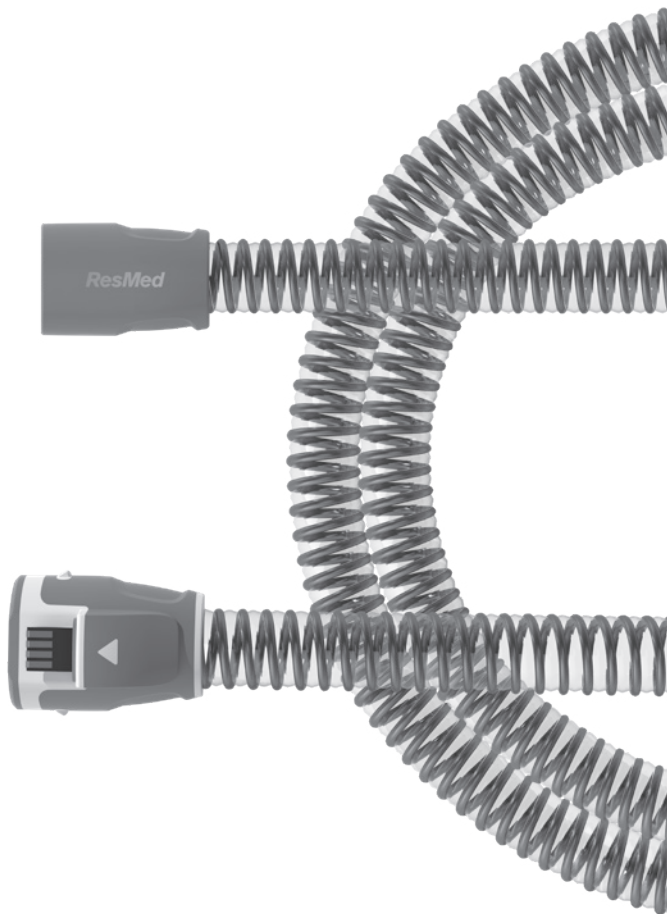




ResMed

ClimateLineAir™ 11



User guide

English | Deutsch | Français | Italiano | Nederlands
Español | Português | Dansk | Svenska | Suomi | Norsk
Eesti | Český | Ελληνικά | Polski | Magyar | Slovenščina
Română | Русский | Türkçe | Български | Hrvatski
Lietuvių k. | Latviski | Íslenska | Bahasa Melayu | Indonesia
한국어 | 繁體中文 | 日本語 | فارسی | اردو | עברית | العربية

About the ClimateLineAir™ 11

Intended use

The ClimateLineAir 11 is a heated breathing tube that delivers air to a compatible mask. It is intended for home and hospital use.

When used with the device humidifier, ClimateLineAir 11 heated air tubing allows you to use the Climate Control feature.

Please read this entire user guide together with your device user guide before using your ClimateLineAir 11 heated air tubing.

Notes:

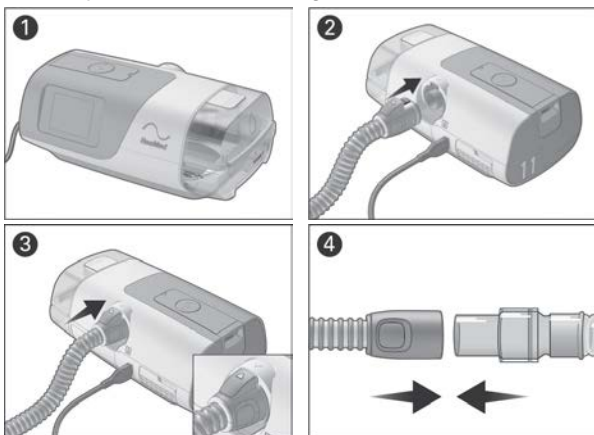
- Not all types of air tubing are available in all regions.
- The ClimateLineAir 11 is the only heated tubing that is compatible with the Air11™ device.

Clinical Benefits

The clinical benefit of humidification is the reduction of positive airway pressure related side effects.

Setting up

To set up the device and tubing:



1. Make sure the device is connected and turned on.
2. Hold the cuff of the heated air tubing and line up the heated air tubing with the outlet connector at the rear of the device.
3. Push the cuff firmly into place. **ClimateLine connected** will briefly display on the device screen.
4. Connect the assembled mask to the free end of the heated air tubing.

Note: The electrical connector end of the heated air tubing is only compatible with the air outlet at the device end and should not be fitted to the mask.

Device Settings

Climate Control

Climate Control is designed to make therapy more comfortable by enabling constant temperature and maintaining humidity.

This feature:

- delivers comfortable humidity level and temperature during therapy
- maintains the set temperature and relative humidity during sleep to prevent dryness in the nose and mouth
- can be set to either **Auto** or **Manual**
- is only available when both the ClimateLineAir 11 and HumidAir™ 11 tub are attached.

Climate Control - Auto setting

Auto is the recommended and default setting. It is designed to make therapy as easy as possible so there is no need to change the temperature or humidity settings.

- Sets the tube temperature to Auto (80°F/27°C). If the air in the mask is too warm or too cold, you can adjust the tube temperature to anywhere from 60 to 86°F (16 to 30°C) or turn it off completely
- Adjusts the humidifier output to maintain a constant, comfortable humidity level of 85% relative humidity
- Protects against rainout (water droplets in the heated air tubing and mask).

Climate Control - Manual setting

Manual is designed to offer more flexibility and control over settings and offers the following:

- Temperature and humidity can be adjusted to find the most comfortable setting
- Temperature and humidity level can be set independently
- Rainout protection is not guaranteed. If rainout does occur, first try increasing the tube temperature
- If the air temperature becomes too warm and rainout continues, try decreasing the humidity.

Note: If Climate Control is set to **Manual**, the **Auto** Tube Temperature setting is not available.

Humidity Level

The humidifier moistens the air and is designed to make therapy more comfortable.

- If you are getting a dry nose or mouth, turn up the humidity
- If you are getting any moisture in your mask, turn down the humidity.
- You can set the **Humidity Level** to Off or between 1 and 8, where 1 is the lowest humidity setting, and 8 is the highest humidity setting.

To update the settings for **Tube Temperature**, **Climate Control**, or **Humidity Level**, tap **MY OPTIONS** from the **Home** screen, go down the list of options, and select the setting. Refer to your device user guide for more information on how to update the device settings.

Cleaning and caring for your tubing

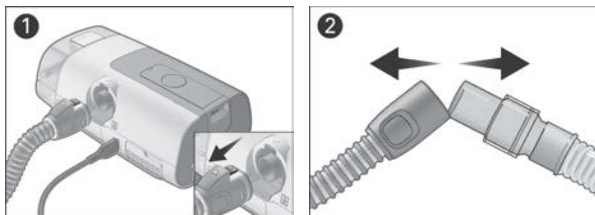
WARNING

Clean the device and its components according to the schedules shown in this guide, to maintain the quality of the device and to prevent the growth of germs that can adversely affect your health.

CAUTION

- Do not use bleach, chlorine, or aromatic-based solutions, moisturizing or antibacterial soaps or scented oils to clean the device, the humidifier tub or air tubing. These solutions may cause damage or affect the humidifier performance and reduce the life of the products. Exposure to smoke, including cigarette, cigar or pipe smoke, as well as ozone or other gases, may damage the device. Damage caused by any of the foregoing, will not be covered by ResMed's limited warranty.
- If any visible deterioration of a system component is apparent (cracking, discoloration, tears etc.), the component should be discarded and replaced.

Disconnecting



1. Pinch the cuff of the air tubing, and gently pull it away from the device.
2. Hold both the cuff of the air tubing and the swivel of the mask, then gently pull apart.

Note: Only hold and pull the cuff of the air tubing. Do not hold or pull the tubing itself as it may cause damage.

Cleaning

The following instructions are for home cleaning. Instructions for reprocessing devices intended for multi-patient re-use can be found in the clinical guide.

You should clean the air tubing weekly as described.

1. Wash the air tubing in warm water using a household dishwashing liquid. It should not be washed in temperatures higher than 131°F (55°C). Do not wash in a dishwasher or washing machine.

2. Rinse the air tubing thoroughly in water.
3. Allow to dry out of direct sunlight and/or heat.

Checking

You should regularly check the air tubing for any damage. If there are any holes, tears, or cracks, you should replace it.

Reassembly

When the air tubing is dry, you can reconnect it to the device.

1. Connect the air tubing firmly to the air outlet located on the rear of the device.
2. Connect the free end of the air tubing firmly onto the assembled mask.

Troubleshooting

If you have any problems, refer to the troubleshooting section of your device user guide or www.resmed.com.

For any serious incidents that occur in relation to this device, these should be reported to ResMed and the competent authority in your country.

Technical specifications

Environmental conditions

Operating temperature:	+41°F to +95°F (+5°C to +35°C) Note: The air flow for breathing produced by this therapy device can be higher than the temperature of the room. Under extreme ambient temperature conditions (104°F/40°C) the device remains safe.
Operating humidity:	10 to 95% relative humidity, non-condensing
Operating altitude:	Sea level to 9,870' (3,010 m); air pressure range 700 hPa to 1060 hPa
Storage and transport temperature:	-13°F to +158°F (-25°C to +70°C)
Storage and transport humidity:	5 to 95% relative humidity, non-condensing

Design life

Air tubing:	6 months
-------------	----------

Air tubing dimensions

Air tubing	Material	Length	Inner diameter
ClimateLineAir 11	Flexible plastic and electrical components	6'6" (2.0m)	0.6" (15 mm)

Operating ranges

Maximum recommended pressure:	30 cm H ₂ O (30 hPa)
Temperature range:	+60°F to +86°F (+16°C to +30°C)
Temperature cut-out:	≤ 106°F (≤ 41°C)